



Particle extraction unit for containers with crowns and crown feed unit on crowner

LCS machine upgrade
No. 0382



This upgrade improves the following

- Efficiency
- Environment
- Media
- Quality
- Personnel
- Material

Benefits of the upgrade
Improved hygiene in the area around the crowner feed unit and high crowner agitator operational reliability

contamination in the crowner feed unit. It is not possible to completely eliminate such particles in the hopper. This system is also not designed to achieve microbiological germ reduction.

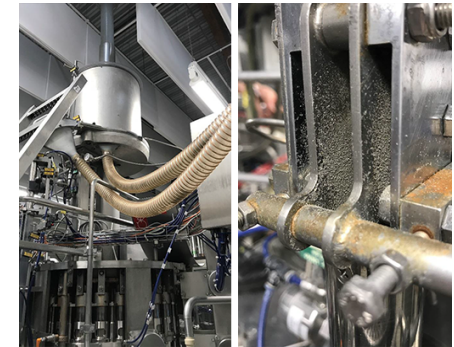
Suitable for the following machine types
All crowners

Installation with minimum production loss
The installation time is 1 to 2 days depending on the machine size. Conversions can be combined with a general overhaul or partial servicing, or can be performed during a non-production period.

Note
This upgrade reduces

The following improvements are achieved

- When using the crown hopper positioned at the crowner, dust particles from the delivery carton or coating particles from the print on the crowns, for example, settle in the hopper.
- The particles from the hopper can be removed as it is now possible to modify the agitator.
- The particles are extracted with the aid of a controllable air current and removed via openings on the base of the agitator.
- An extraction point is also positioned on the crown chute, at the agitator discharge, thus allowing the crowns to be guided in very clean conditions.
- Both suction positions are lead via spiral reinforced hoses to an extraction blower where the dust is collected in a filter. The filter must be replaced once the maximum amount of particle debris has been reached.



Contact
Please send your enquiry to your local subsidiary or contact upgrades@krones.com.

