



# Optimum utilisation of the film reel by means of calculated fill remainder detection for Variopac packers

LCS machine upgrade  
No. 0180



## This upgrade improves the following

- Efficiency
- Environment
- Media
- Quality
- Personnel
- Material

### Benefits of the upgrade

Optimum utilisation of the film on the reel

### Suitable for the following machine types

All KRONES packers for nonreturnables Type Variopac (from Machine Number KR96)

### Installation with minimum production loss

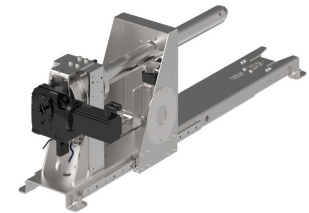
For the modification work and commissioning approx. 2 working days and 2 KRONES service technicians are required. The modification work can also be combined with a major overhaul or a partial repair project.

### Note

In order to ensure trouble-free functioning, the end of the film has to be glued to the core. The reserve space in the control cabinet has to be checked. There is an option for retrofitting an adjustable film pin.

## The following improvements are achieved

- By means of sensor technology and servomotorised film unwinding, the precise diameter of the film reel is continuously computed, so that less than 10 metres of film remain on the core.
- The film minimum is reliably detected – when the outer diameter of the film reel core has been set.
- Standard films glued to the core (including printed films) can be used without any preparation.
- Unintended maladjustment of the sensor is not possible. In addition the sturdy sensor technology functions independently of light conditions and soiling situations.



### Contact

Please send your enquiry to your local subsidiary or contact [upgrades@krones.com](mailto:upgrades@krones.com).

