



Splicing point detection for cartons

Inspection systems for the dry section



Keeping a lid on it



It is the perfect accompaniment for packers: The Checkmat 725 keeps a very close eye on the cartons while they are being glued. It checks if enough glue has been applied – and thus ensures that the cartons are securely closed when they reach the retail market.

At a glance

- Direct integration in the lead machine
- Verification with a camera system
- 99.9 % detection of consecutive faults



Splicing point detection integrated in the lead machine

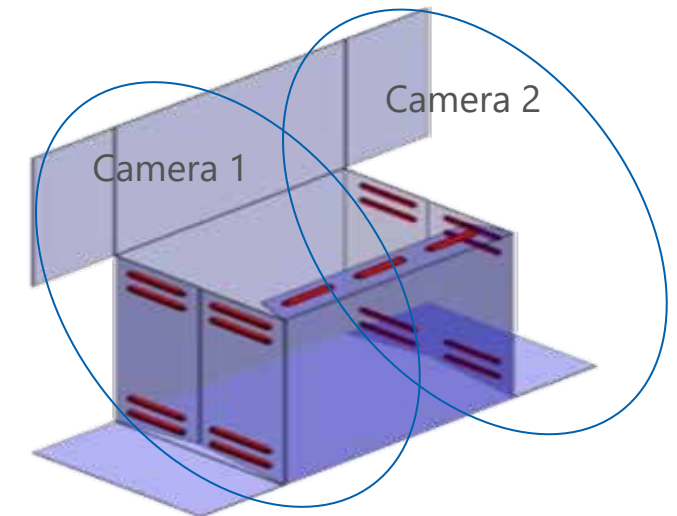


Inspection of the closed cartons for	max. packs per min
the application of hotmelt via temperature measurement	120
the number of glue beads	57
the length and width of the glue beads	57



Technical features

- Two infrared cameras in the direction of operation
- As an option: two more cameras transverse to the direction of operation (for 360° inspection)
- Visualisation system in the lead machine
- No rejection system provided
- 99.9 % detection of consecutive faults



Splicing point detection integrated in the lead machine



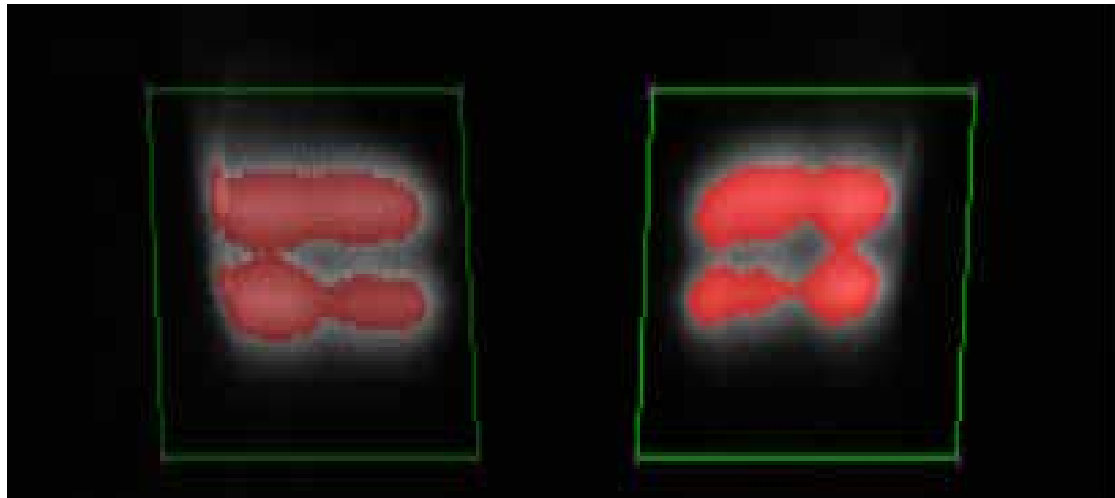
Factors which influence the detection accuracy

Carton thickness

Colour and coating of the surface

Quality of the blank

Varying production speed



Variopac Pro W/WT/WTS



Method of operation

- W = wrap-around packaging
- WT = wrap-around and tray packaging
- WTS = wrap-around, tray and tray-shrink packaging

Range of applications

Adjustments at the lead machine type Variopac Pro W/WT/WTS:

- The lengths of the glue beads can be adjusted on the touch-screen.
- Glue beads can be interrupted, depending on the format.
- Spot application and line application are possible.



Splicing point detection

**SOLUTIONS
BEYOND
TOMORROW**

