



# Canmatic

For wrap-around labelling with pre-cut labels and hotmelt



 **KRONES**

# High flexibility with wrap-around labelling



For container decoration with hotmelt and cut wrap-around labels, the Canmatic is setting standards already for many years. The machine has been designed as rotary machine and is equipped with a precisely operating labelling station. With regard to efficiency, accuracy and speed, the Canmatic absolutely takes a leading position.

## At a glance

---

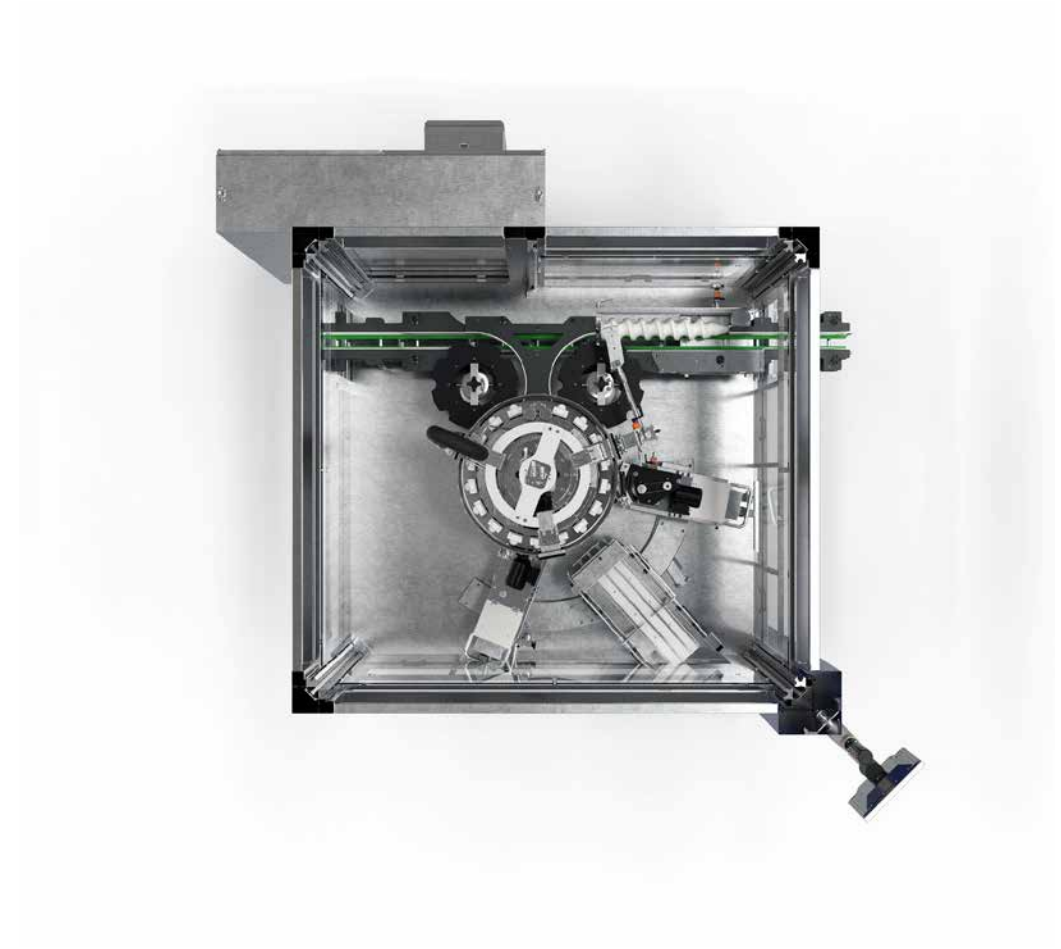
- Wrap-around labelling of cylindrical and specially shaped containers
- Precise container fixing using centring bells and container plates
- High-speed access to the user interface through individual transponders
- Remote maintenance is available as an option



# Method of operation



- 1** An infeed worm spaces the incoming containers to the correct machine pitch.
- 2** The infeed starwheel transfers the containers to the rotating container table.
- 3** Here they are firmly held and centred between the container plates and the centring bells.
- 4** The first hotmelt unit applies a vertical strip of glue to the container.
- 5** The container picks up a label from the label magazine with a glue strip.
- 6** The second hotmelt unit applies glue to the end of the label. The label is glued on the overlap.
- 7** The labelled containers are collected by the discharge starwheel and transferred to the conveyor.



# Two variants for wrap-around labelling



## Canmatic with CL labelling station

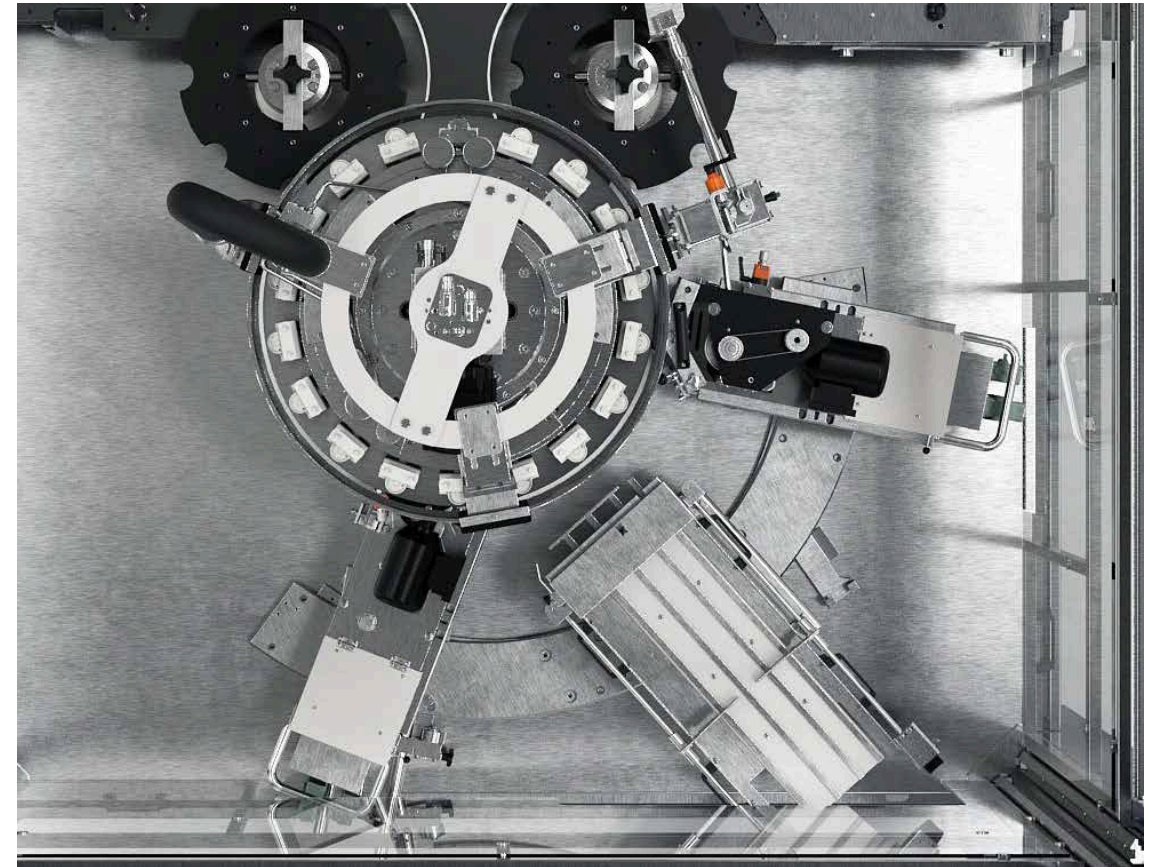
- Output range of 3,000 to 72,000 containers per hour, with only one labelling station, depending on the label length
- Two independently operating hotmelt units with glue roller
- Consistent leading and trailing-edge gluing quality

## Canmatic with glue spraying system

The leading edge is glued via individual nozzles, the trailing edge is glued using a continuously slotted nozzle.

- Output range of 3,000 to 64,000 containers per hour with only one labelling station, depending on the label length
- Reduced cleaning times as well as reduced energy and media consumption thanks to closed gluing systems

CL: Classic



In the glue spraying system the first hotmelt unit is replaced with several spraying nozzles and the second one with a slotted nozzle.

# Canmatic CL labelling station with glue rollers



## Technical features and benefits

- Two independently operating hotmelt units
  - Robust mechanical design
- Individual adjustment of the glue temperature on the hotmelt units
- Exact regulation of the glue film thickness using a scaled micrometer adjusting screw
  - Consistent leading and trailing-edge gluing quality
- Magazine for approx. 9,000 wrap-around labels, position adjustable
  - User-friendly label refilling
- Overlapping correction possible during production
  - Mechanical technology for demanding framework conditions (power fluctuations, dust, etc.)
- Adjustment of the axes with a handwheel including register
  - Quick and repeat accurate change-over of the decoration

CL: Classic



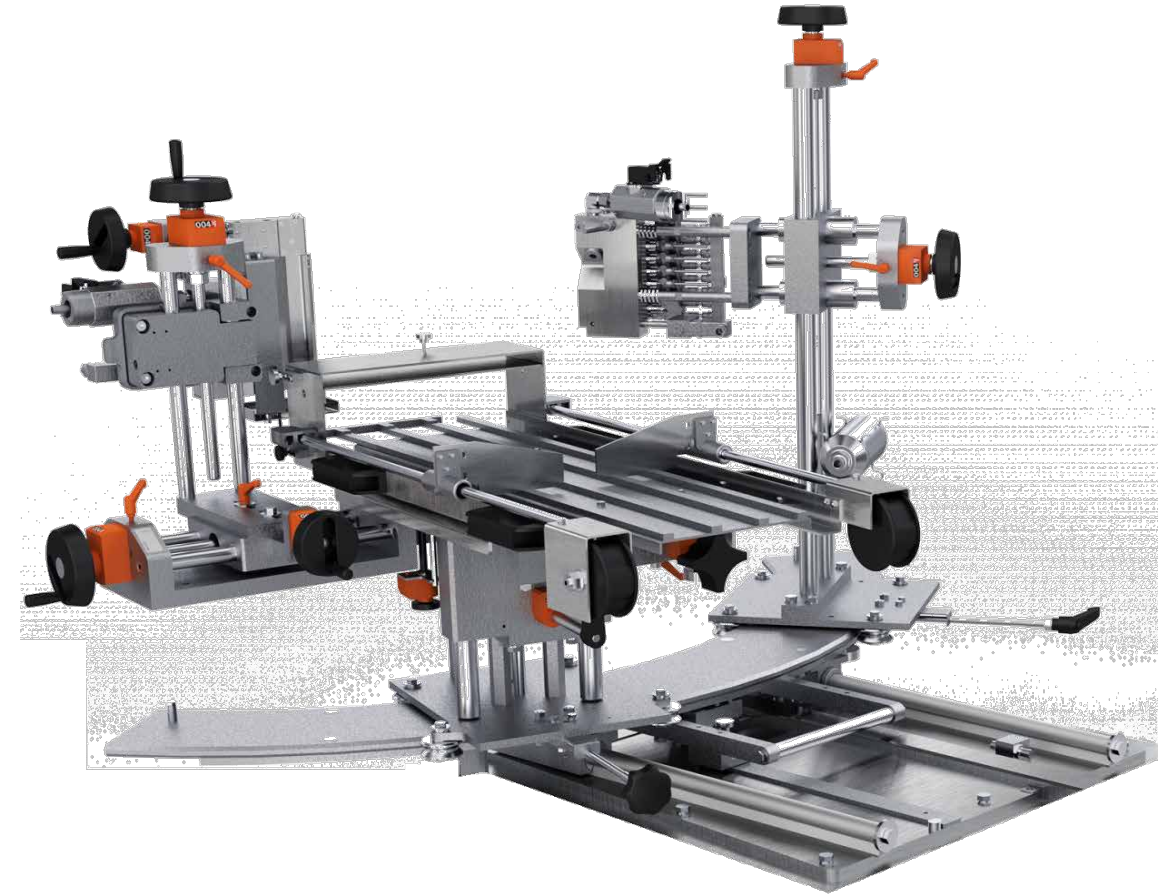
# Canmatic CL labelling station with glue spraying system



## Technical features and benefits

- Individual nozzles for leading-edge gluing, continuous slotted nozzle for trailing-edge gluing
  - The amount of glue applied can be individually adjusted to suit the container and label
- Closed gluing system
  - Reduced cleaning times
  - Considerably longer cleaning intervals
  - Lower consumption of energy and media
  - Significant glue saving of up to 50 percent (in comparison to the conventional system)
- No glue roller as a handling part
  - Saving several minutes for each change-over process
- Contact-free glue application with nozzles
  - No cleaning of glue rollers required

CL: Classic

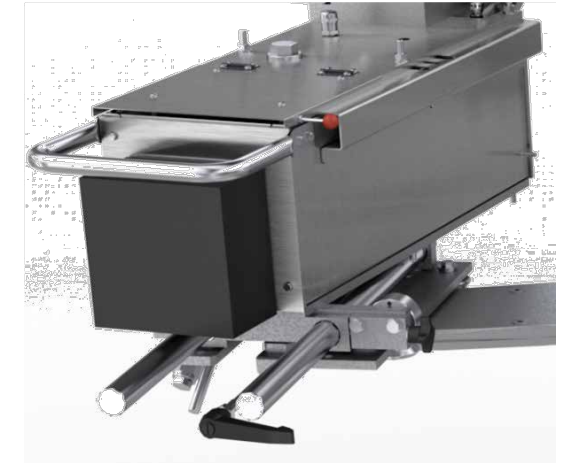


# Additional equipment



## Hotmelt bowl with glue level monitoring

- An electronic measuring device monitors the fill level in the hotmelt bowl
- When the fill level is low, a warning will be displayed on the HMI



## Multifunctional clamping starwheel

- Available as infeed, discharge, or distribution starwheel
- No curved guides required
- Use of starwheels for several container types with varying diameters
- Can be used as a rejection unit after the label inspector



# System expansion

## Checkmat inspection unit



### Method of operation

Configuration in packages (0, 1, 2, 3) with the following inspection options for the label and print depending on the requirements:

1. Presence
2. Position and slant
3. Correctness using a 2D code
4. Comparison of pattern and logo
5. Flagging labels
6. Bar code: Check for presence and read
7. OCR (Optical Character Recognition): Check for presence and read (e.g. date)

### Benefits to you

- Rejection of faulty containers
- Comprehensive statistics functions and software
- Perfect integration in the main machine
- Relief for the operators
  - Creation of new types for additional graphics with wizard



Compact camera



EM camera in packages (0, 1, 2, 3)



# Benefits to you



## User friendliness

The Canmatic features ease of access and ease of operation.

## Low glue consumption

Only two narrow strips of hotmelt are required for labelling, one at the leading edge and the other one at the trailing edge of the label.

## High performance

Both Canmatic variants cover all requirements for precision labelling from the low to the maximum output range.

## High labelling precision

Fixation of containers between the centring bell and the container plate ensures a highly precise container decoration.

## Maximum availability

The machine is based on a robust labelling technology tolerating faults.

## Time savings

Only short change-over times needed when changing container or label type.

## Future-proof

The Canmatic can be retrofitted and converted also after many years of operation.



## Request new machine

You can easily send a request for a non-binding quotation in our [Krones.shop](#).



# Everything from a single source



## KIC Krones adhesives – the all-rounder for a strong grip

---

Regardless if PET or glass, plastic or paper, labels or packagings – at KIC Krones, you will find your ideal adhesives for a high-quality product presentation.

## KIC Krones cleaning agents make your machine shine

---

Only if the production environment is immaculate, can your product be brilliant. KIC Krones provides you with the optimum cleaning agents and disinfectants for each individual production step.

## KIC Krones lubricants for each production step

---

Whether for gears, chains or central lubrication systems – our greases and oils are true all-round talents. They can reach every lubrication point, protect your line and ensure gentle treatment for your products thanks to their food-grade quality.

## Krones Lifecycle Service – Partner for Performance

---

It goes without saying that also after the purchase of new machines, Krones takes care of your lines: The Krones LCS experts are always there to help you reaching your goals and turn your wishes into optimal LCS solutions.



**SOLUTIONS  
BEYOND  
TOMORROW**

