



# Reference lines

With focus on sustainability



# Saving resources? That's up to you!



Sustainability has many facets – and they do not all fit in the same size. When it comes to saving resources, every product, every line and every location contribute their individual factors to the equation. Therefore, we look at each project individually: You simply tell us about your plans for your line. We will then elaborate a concept which meets your production goals to one hundred percent and which uses all savings potentials worthy to be exploited in economic terms.



# Efficiency in stainless steel



## The line

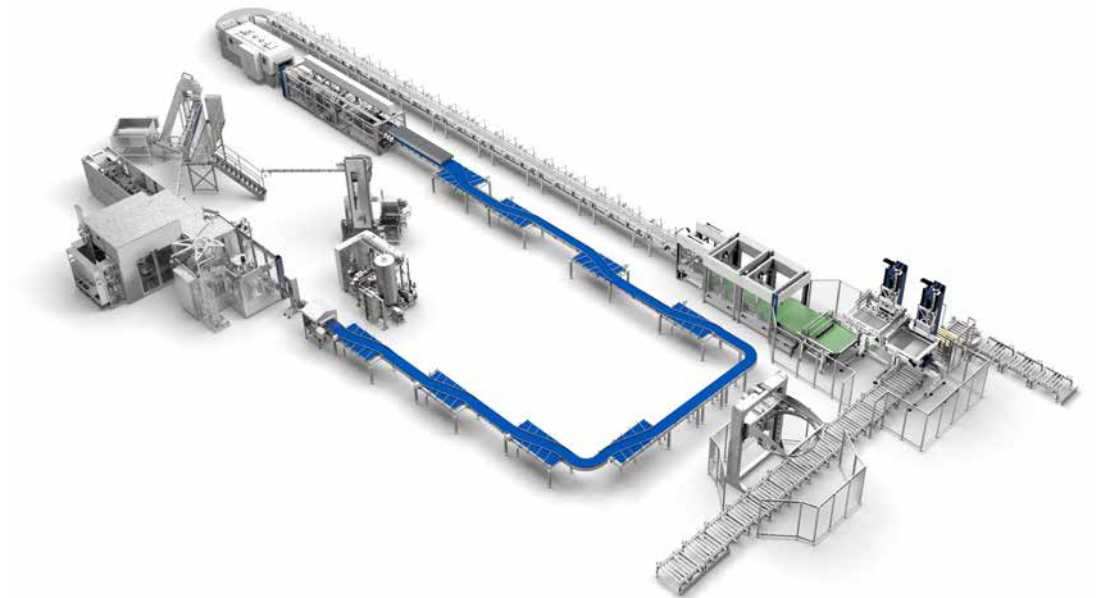
---

- Product: non-carbonated water
- Container: Non-returnable PET
- Filling volume: 500 millilitres
- Pack: 6x4 shrink-only
- Output: 36,000 containers per hour

## Used potentials

---

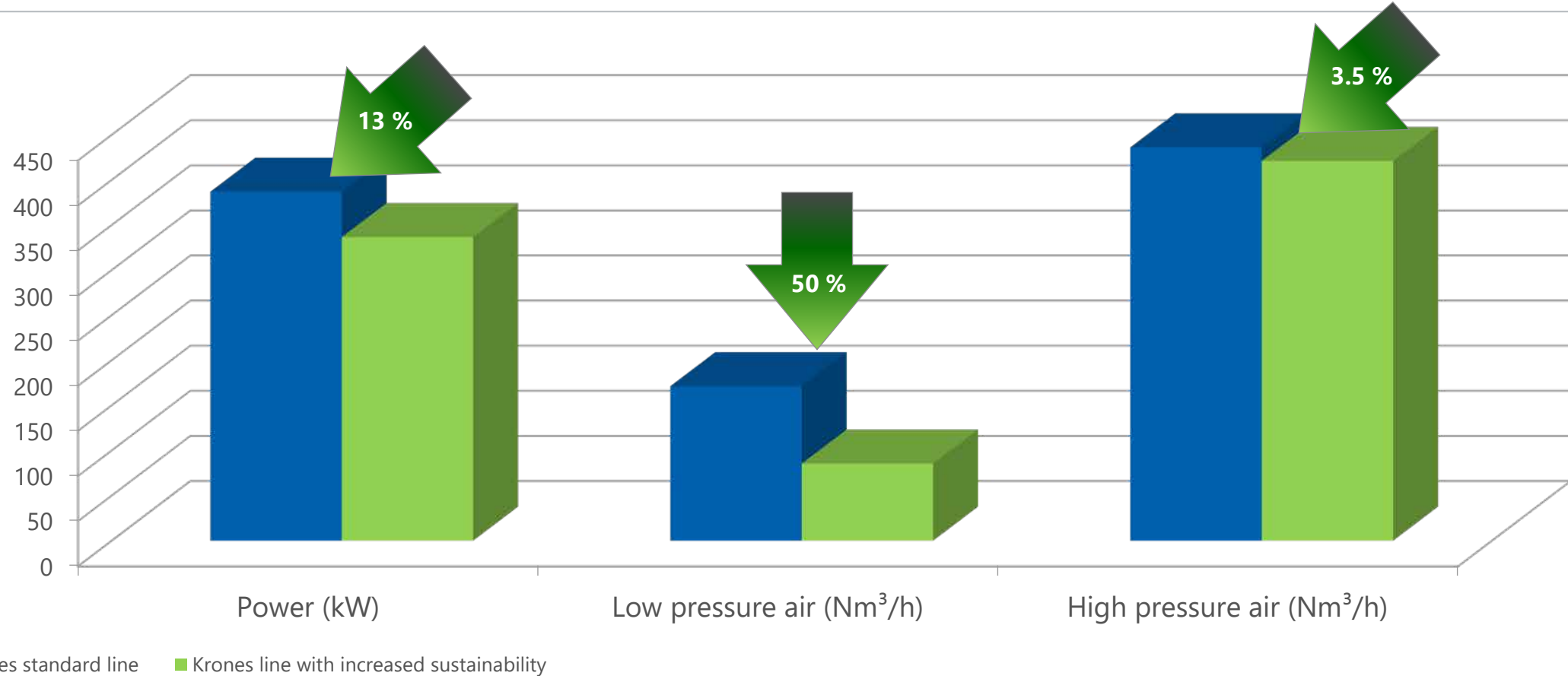
- All enviro options for the individual machines
- Flexidry cap dryer uses an electrical blower instead of compressed-air
- Optimised preform materials
- Energy-efficient Contiform 3 Pro
- Optimised dryer with a clocking down to 140 Hz
- Optimisation of the OEM machines, e. g. dimensioning of the stretch wrapper



# Your benefits in figures



## Non-returnable PET – 36,000 bph with 500 ml non-carbonated water in 6x4 shrink-only



# Efficiency in stainless steel



## The line

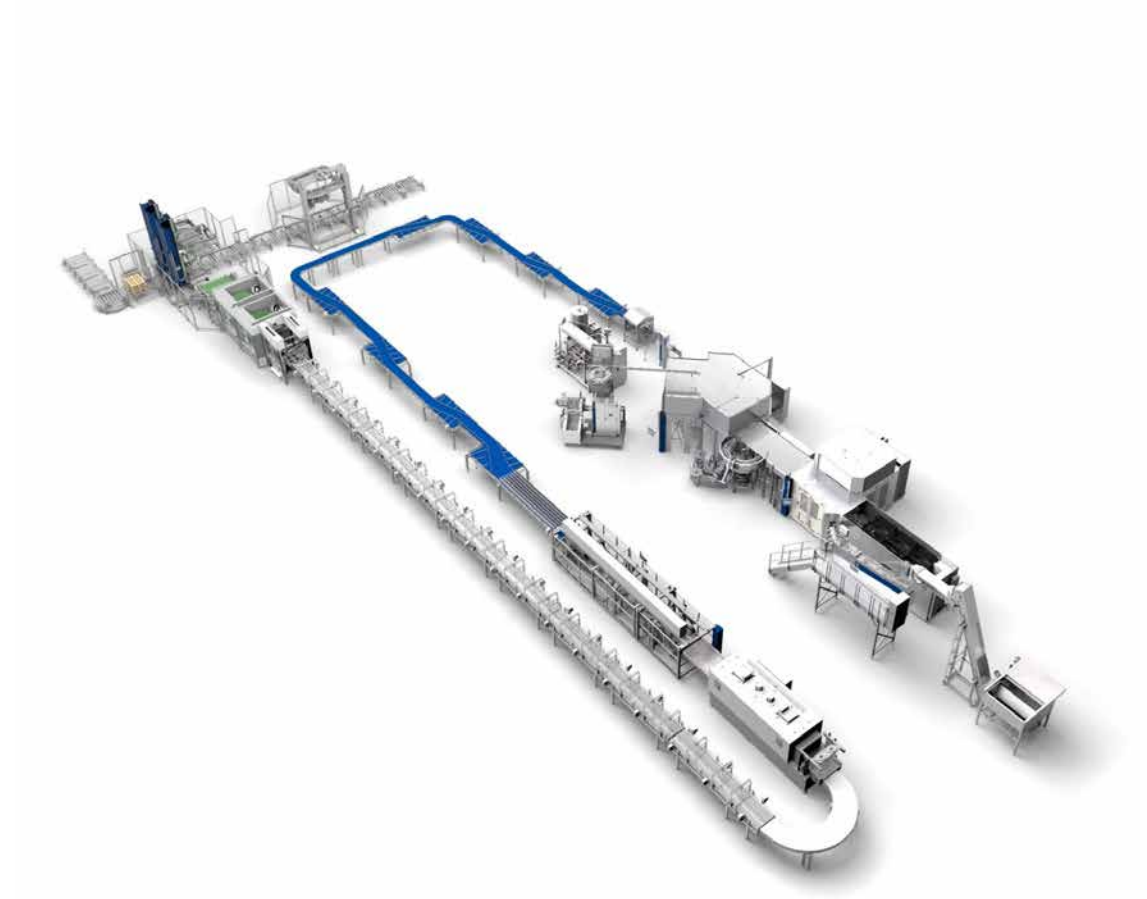
---

- Product: Carbonated soft drinks
- Container: Non-returnable PET
- Filling volume: 1,500 millilitres
- Pack: 3x2 shrink-only
- Output: 36,000 containers per hour

## Used potentials

---

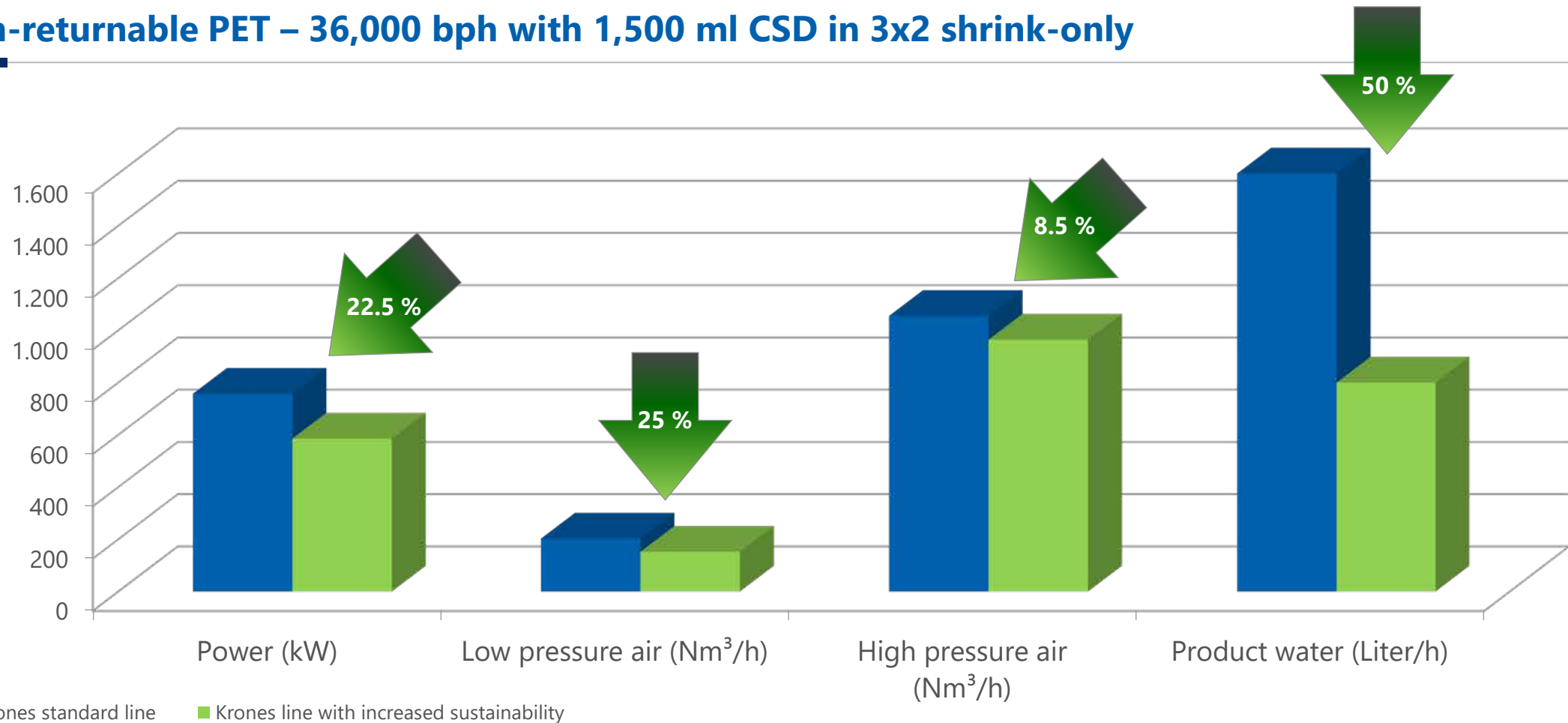
- All enviro options for the individual machines
- Flexidry cap dryer uses an electrical blower instead of compressed-air
- Optimised preform materials
- Energy-efficient Contiform 3 Pro
- Optimised dryer with a clocking down to 140 Hz
- Optimisation of the OEM machines, e. g. dimensioning of the stretch wrapper
- Newly developed vacuum pump for the filler



# Your benefits in figures



## Non-returnable PET – 36,000 bph with 1,500 ml CSD in 3x2 shrink-only



# Efficiency in stainless steel



## The line

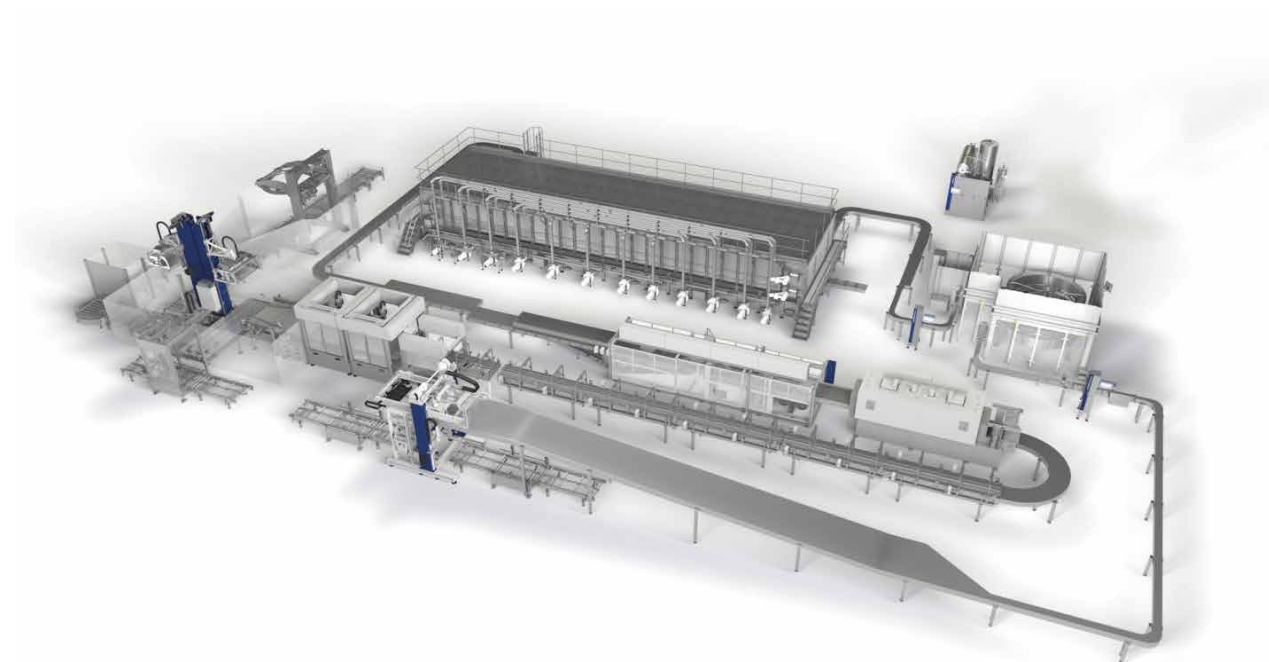
---

- Product: Beer
- Container: Non-returnable glass
- Filling volume: 250 millilitres
- Pack: 6x4 carton
- Output: 50,000 containers per hour

## Used potentials

---

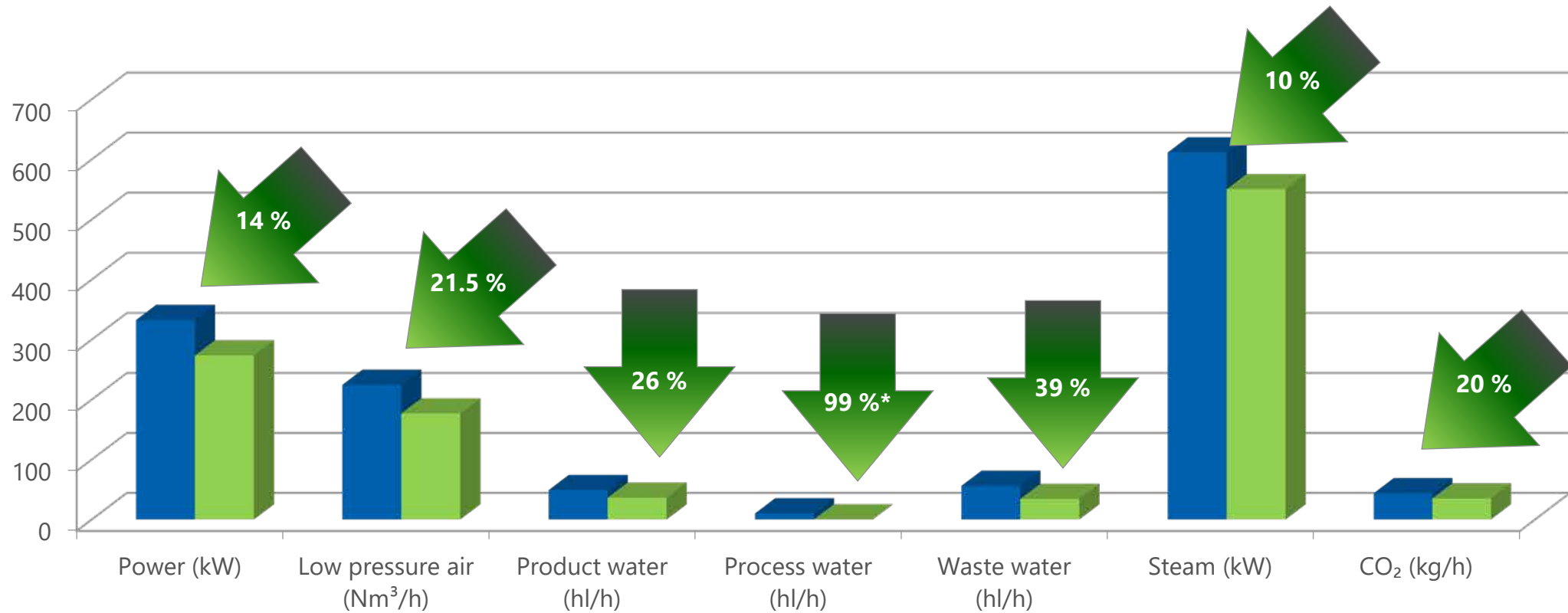
- All enviro options for the individual machines
- Water recycling at the rinser, pasteuriser and the wet conveyor lubrication system
- Reduction of the CO<sub>2</sub> consumption from 350 g/hl to 280 g/hl
- Flexidry cap dryer uses an electrical blower instead of compressed-air
- Optimised dryer with a clocking down to 140 Hz
- Optimisation of the OEM machines
- Improved pasteuriser



# Your benefits in figures



## Non-returnable glass – 50,000 bph with 250 ml beer in 6x4 carton



■ Krones standard line ■ Krones line with increased sustainability \* During operation with well-established water-recycling mode



# Efficiency in stainless steel



## The line

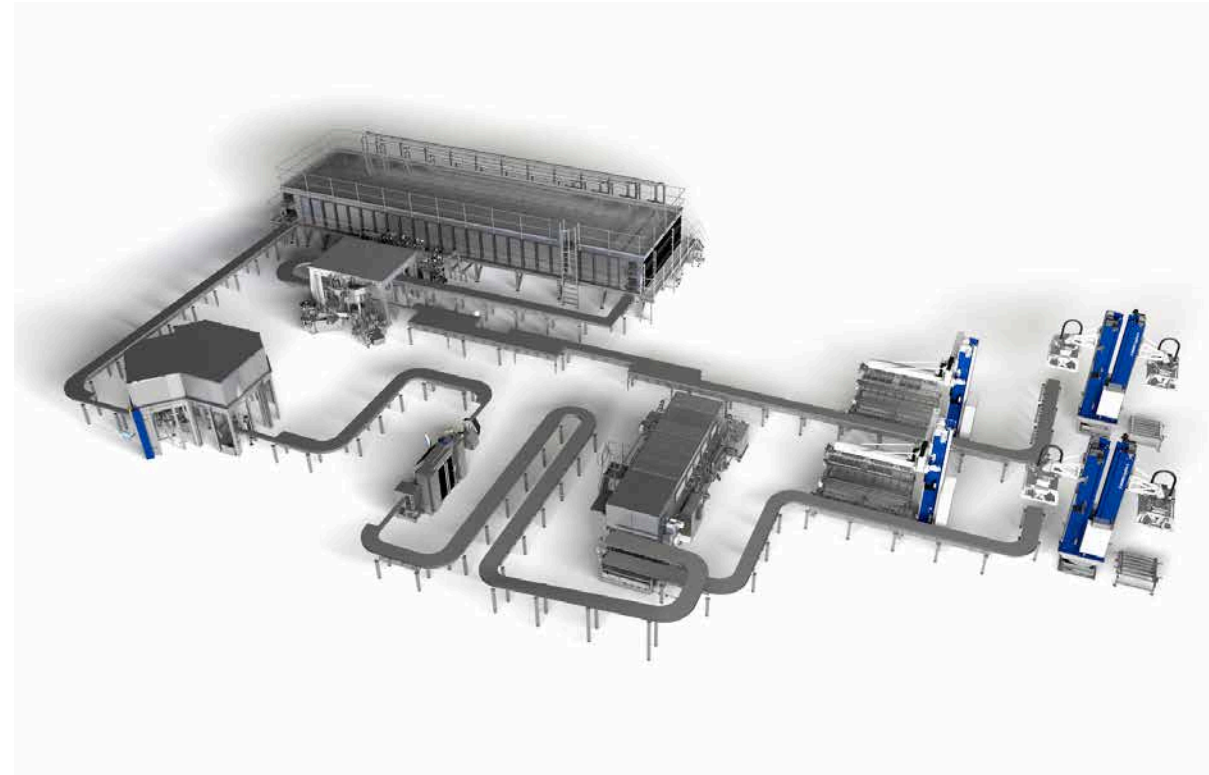
---

- Product: Beer
- Container: Returnable glass
- Filling volume: 600 millilitres
- Pack: 5x4 crate
- Output: 60,000 containers per hour

## Used potentials

---

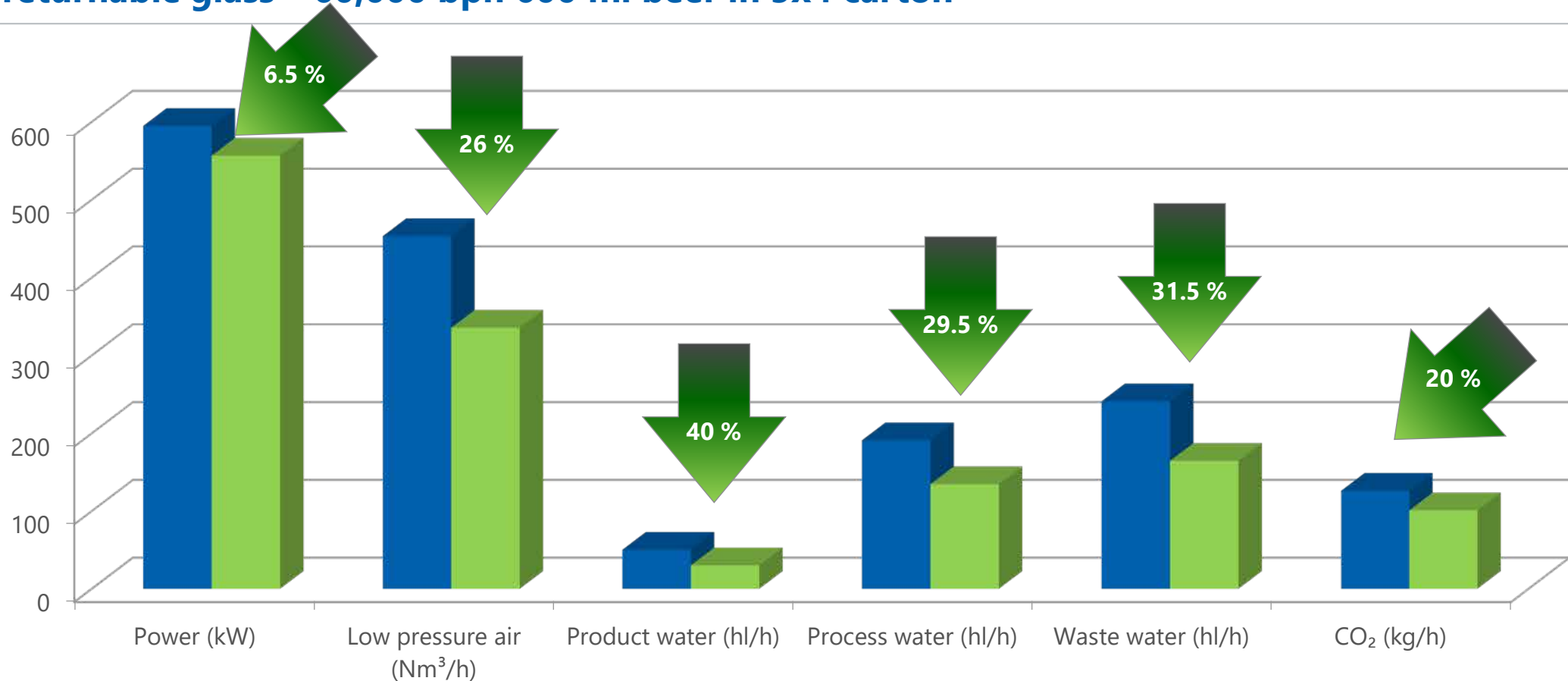
- All enviro options for the individual machines
- Water recycling at wet conveyor lubrication system, bottle washer, crate washer and bottle spraying system
- Reduction of the CO<sub>2</sub> consumption from 350 g/hl to 280 g/hl
- Flexidry cap dryer uses an electrical blower instead of compressed-air
- Optimised dryer with a clocking down to 140 Hz
- Optimisation of the OEM machines



# Your benefits in figures



## Non-returnable glass – 60,000 bph 600 ml beer in 5x4 carton



■ Krones standard line ■ Krones line with increased sustainability

# Benefits to you



## Individual solution

---

At Krones, sustainability is a question of your personal goals. For this reason, we create every line individually. For each task, we select the best-suitable components and implement them into a harmonic and high-performance overall solution.

## Measurable results

---

Are you planning on having a line that sets a benchmark on sustainability? No problem: Our energy and media experts will support you all the way. With expert analyses, objective assessments and, in particular, with well-proven solutions for a measurable success.

## Requesting a new machine

You can easily send a request for a non-binding quotation in our [Krones.shop](#).



**SOLUTIONS  
BEYOND  
TOMORROW**

